



KONICA MINOLTA

magicolor 2550 Series



Compact & Versatile
Network
Color Lasers



Compact & Versatile Network Color Lasers



QUICK SPECS

- 20 ppm in black & white, 5 ppm in color
- 300 MHz PowerPC processor
- 9600 x 600 dpi-class Photo ART contone resolution
- magicolor 2550 EN: 128 MB DDR SDRAM std., 640 MB max.
- magicolor 2550 DN: 256 MB DDR SDRAM std., 640 MB max.
- 10/100BaseTX Ethernet®, USB 2.0, and parallel interfaces
- First page out in 13 seconds (b&w), 22 seconds (color)
- PostScript® 3 (144 fonts) and PCL® 6 (93 fonts) printer emulations
- Windows®, Macintosh®, and Linux® compatible
- Automatic two-sided printing (magicolor 2550 DN)
- 35,000 page-per-month duty cycle
- 1-year exchange warranty

The compact and affordable magicolor 2550 Series printers boast the enhanced graphics quality and high-end printing features typically found in larger, more expensive models.

Compact and Affordable

These little powerhouses are the perfect fit for any desktop and budget.

- Though they're small enough to fit into any workspace, the magicolor 2550 printers have the power to handle the demanding requirements of both small offices and large workgroups.
- Full front access means reloading supplies and clearing media jams is a snap.
- Long-lasting toner yields 1,500 (standard capacity) or 4,500 (high capacity) prints for low cost-per-page printing.
- Technical support is US-based and toll-free for 5 years. Answer times consistently average under 1 minute.

Printing Power & Performance

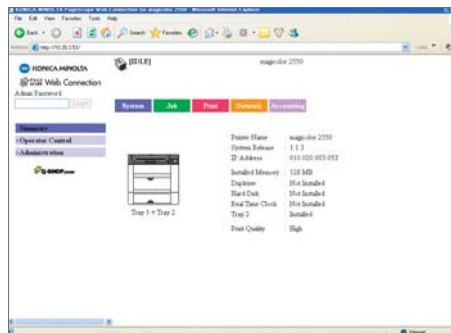
The magicolor 2550 Series provides the speed needed to satisfy demanding job requirements.

- Emperon technology boosts printer performance and enhances image quality in Windows, Macintosh, and Linux environments while simplifying the entire printing process.
- The 300 MHz PowerPC CPU quickly processes even the most complex files.
- DDR SDRAM doubles file data throughput and swiftly delivers print jobs.

Ease of Use

Easy setup and operation are built into the magicolor 2550 Series.

- Pre-installed high-capacity toner cartridges and auto-installation software mean the magicolor 2550 printers are ready to print in just minutes.
- Print jobs can be customized easily with comprehensive printer drivers that offer collation, fit-to-page scaling, separation pages, watermarks, tray selection, secure printing, and many other features.
- The PageScope™ suite of printer utilities allows network administrators to configure and manage printers remotely.
- PageScope Web Connection provides instant access to print job status and supply levels.
- The 10/100BaseTX Fast Ethernet® interface provides high-speed network printing for busy workgroups. USB 2.0 and parallel ports are also available for local operation.



Brilliant, Consistent Color

A legacy of innovative color technology ensures outstanding image quality.

- Enhanced Automatic Image Density Control (eAIDC) ensures consistent, accurate color from the first page to the last and from one document to the next.
- 9600 x 600 dpi-class Photo ART quality and contone screening deliver amazing photographic detail, smooth color gradients, and crisp text.
- Industry-standard ICC-based color matching provides automatic or single-button controls for automatic color correction of print files.



- KONICA MINOLTA Simitri® Polymerized Toner produces sharper output, finer text, and smoother halftones than conventional toner on all common media types. This state-of-the-art toner technology also reduces toner and energy usage.



basics

options

CONTROL PANEL

- Intuitive display and menu
- At-a-glance toner gauges

PRINT SPEED

- Color: Up to 5 ppm
- B&W: Up to 20 ppm

INTERFACES

- Fast Ethernet (10/100BaseTX), Hi-Speed USB 2.0, Parallel

MEMORY

- magicolor 2550 EN: 128 MB DDR SDRAM
- magicolor 2550 DN: 256 MB DDR SDRAM

COMPATIBILITY

- Windows Vista/Server 2003/XP/2000/NT4/Me/98SE
- Macintosh OS X (v10.2+)/OS 9 (v9.1+)
- Linux Red Hat 9/SuSE 8.2
- PostScript 3, PCL 6 emulations

RESOLUTION

- 9600 x 600 dpi-class with Photo ART
- eAIDC and ICC-based color matching

DOCUMENT HANDLING

- Automatic duplexer for two-sided printing (magicolor 2550 DN)

PAPER INPUT

- Up to legal (8.5" x 14")
- Adjustable 200-sheet multipurpose tray



HARD DISK

- For downloaded fonts, forms, and profiles; electronic collation; Job Accounting; direct PDF printing; Proof then Print, Secured Job, Print & Hold, and Stored Job functions

MEMORY

- Upgrade to 640 MB

DOCUMENT HANDLING

- Automatic duplexer for two-sided printing (magicolor 2550 EN); additional memory required for 9600 x 600 dpi-class full-color prints: 128 MB (letter) or 256 MB (legal)

PAPER INPUT

- 500-sheet cassette (letter or A4)
- 700-sheet maximum input capacity



Cross-Platform Compatibility

The magicolor 2550 Series is the ideal printing solution for diverse office workgroups.

- PostScript 3 and PCL 6 emulations support most popular software applications, providing seamless creation and processing of all your color documents.
- With Windows, Macintosh, and Linux system compatibility, the magicolor 2550 Series is at home in any workgroup.
- Support for NetWare®, TCP/IP, EtherTalk®, and NetBIOS/NetBEUI ensures smooth integration into mixed network configurations.



